

EMPOWERING GLOBAL TRANSFORMATION



Harnessing
Global
Knowledge
& Trends

Innovating
Pedagogy
& Learning
Environments

Inspiring
Leadership
Excellence

02 DEAN'S MESSAGE
Can Asia Lead
the World?

03 VISION
MISSION

04 GOVERNING
BOARD
Guided by leaders,
for leaders

05 OVERVIEW
The Lee Kuan
Yew School of
Public Policy's
impact and global
footprint

07 OPPORTUNITIES AND
ADVANTAGES
Gateway to a
future in Asia

09 GLOBAL
PARTNERSHIP
International
learning with
an Asian focus

11 DISTINGUISHED
VISITORS
Iconic leaders
at our doorstep

13 ALUMNI
Igniting real-
world, positive
transformation

15 RESEARCH
APPROACH
Shaping
scholarly
inquiry and
policy-making

17 RESEARCH
CENTRES
Centres for
advancing
policy research

19 FACULTY
Leading by
experience
and example

21 INNOVATIVE
PEDAGOGY
Engaging students
through active learning

23 CAMPUS AND
ACCOMMODATION
Home — where
past, present
and future meet

25 GRADUATE
PROGRAMMES
Interdisciplinary
learning, innovative
teaching

27 EXECUTIVE
EDUCATION
Greater learning
opportunities

29 FUNDING AND
SUPPORT
The foundation
of our impact

This School is the venue for scholars, officials and students from the world over to gather, research, and exchange ideas on how societies are best governed in a globalising world. All participants will benefit from a rigorous study of policies that have succeeded and those that failed.

Lee Kuan Yew

Former Prime Minister, Singapore

Distinguished Fellow, Lee Kuan Yew School of Public Policy



CAN ASIA LEAD THE WORLD?



The time for Asia is now. For years now the world's economic centre has been pulling away from the West. While some might argue who will take America's place as the engine of the world economy, the facts are clear and undisputed. According to the Organisation for Economic Cooperation and Development, Asia is and will continue to be the world's fastest-growing region, with China and India leading the charge. By 2050, these two countries will become the world's largest economies. The world's economic centre will be in Asia. A new world order is taking shape, definitely economically but potentially politically as well.

In this re-assignment of global leadership, the Lee Kuan Yew School of Public Policy (LKYSPP), part of the National University of Singapore, will continue to inspire, improve lives, and take central position in the conversation to transform Asia. We do this by working hard on two planks: pursuing academic and intellectual excellence, and crafting lessons for meaningful public policy-making.

Professor Kishore Mahbubani, the school's Founding Dean, has produced outstanding results in this regard. In his years as Dean since the School was founded in 2004, LKYSPP has flourished to become one of the world's most respected schools of public policy.

Our valuable partnerships have resulted in productive collaborations with other leading global institutions. Our active and diverse faculty contribute op-ed articles to widely-read publications. Governments in Asia look to us for advice. In 2017, we co-organised the prestigious International Conference on Public Policy, attended by more than 1,300 participants from 80 countries.

Housed in the beautiful and lush Singapore Botanic Gardens, a UNESCO World Heritage Site, our campus includes four vibrant research centres.

Their research and in-depth case studies touch every aspect of public policy in Asia, from geopolitics, water management and urban planning, public housing and healthcare, and economic competitiveness, to education and the environment.

Indeed, we will continue to draw precious knowledge and experience from the country's best minds in public policy – whether as part of our faculty, guest lecturers, or as collaborators with our researchers – to pursue and develop both world-changing ideas and everyday practical solutions for this historical era.

Yet, despite being a Singapore institution, LKYSPP has a very diverse student population. Twenty percent of our students are from Singapore; the remaining eighty per-cent from all corners of the world. This not only adds to the richness of our classroom discussions, but also provides networking opportunities outside the walls of academia and beyond our shores. The school has graduated over 3,500 individuals from 94 countries and territories, equipping them with genuine insight on Asia and the world.

Such knowledge and understanding on Asia and its place in the world will be critical in this time of transition. Against the backdrop of a rising Asia, LKYSPP offers the best of Asian pragmatism and Western learning. The time for Asia is now. Prepare yourself for that future by enrolling in the school today.

Professor Danny Quah

Dean and Li Ka Shing Professor in Economics,
Lee Kuan Yew School of Public Policy

VISION



A world transformed through
good governance and
leadership excellence.

MISSION



To be the leading global public policy
school in Asia, developing thought
leadership, improving standards of
governance, and transforming lives for a
more sustainable world.

GOVERNING BOARD

GUIDED BY LEADERS, FOR LEADERS

The Lee Kuan Yew School of Public Policy (LKYSPP) Governing Board upholds our Vision and Mission by providing strategic direction and overseeing development and management.

Comprising renowned academics in the field of public policy, senior civil servants and leading figures from the private sector, the Board plays a pivotal role in maintaining LKYSPP as the school of choice for public policy in Asia.

04

Chairman:

Mr GOH Chok Tong

Emeritus Senior Minister, Singapore

Members:

Dr Muhamad Chatib BASRI

Chairman, PT Bank Mandiri Tbk

Ms CHEW Gek Khim

Executive Chairman,
The Straits Trading Company Ltd

Prof Victor HALBERSTADT

Professor of Public Sector Economics,
Leiden University

Dr Noeleen HEYZER

Social Scientist and Former United Nations
Under-Secretary-General

Mr Peter HO

Senior Advisor, Centre for Strategic
Futures, and Chairman, Urban
Redevelopment Authority

Dr Ernest KAN

Senior Advisor, Deloitte & Touche LLP

Mr NG Kok Song

Chairman, Avanda Investment
Management Pte. Ltd.

Prof Danny QUAH

Dean & Li Ka Shing Professor in
Economics, Lee Kuan Yew School of
Public Policy

Ambassador Susan C SCHWAB

Strategic Advisor, Mayer Brown LLP

Mr Peter SCHWARTZ

Senior Vice President (Strategic Planning),
Salesforce

Mrs TAN Ching Yee

Permanent Secretary (Prime Minister's Office)
(Special Duties) and Permanent Secretary
(Finance)

Prof TAN Eng Chye

President, National University of Singapore

Mr Leo YIP

Head of Civil Service, Permanent Secretary
(Prime Minister's Office, Prime Minister's Office
(Strategy) & National Security and Intelligence
Coordination), Prime Minister's Office

OVERVIEW

THE LEE KUAN YEW SCHOOL OF PUBLIC POLICY'S IMPACT AND GLOBAL FOOTPRINT



National University
of Singapore (NUS)
is one of
Asia's leading Universities

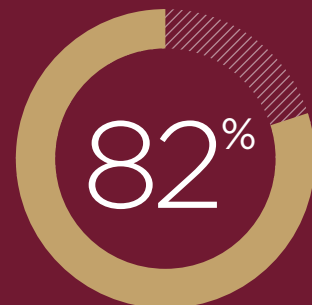


Member of the Association of Professional
Schools of International Affairs (APSIA)
and the Global Public Policy Network (GPPN)



Asian school in the
Global Public Policy
Network (GPPN)

Classroom Diversity



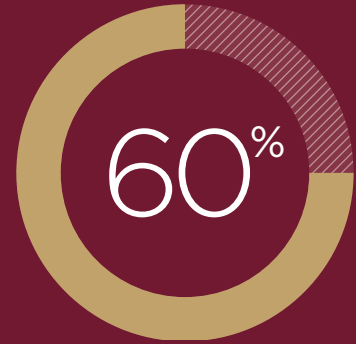
International Students
from 30 countries

Executive Education trained over



24,000 Professionals from **114** countries

More than



of cohort receive scholarships

Over **3,500** graduates from **94** nationalities



LKYSPP and **4 Research Centres**

Produced over

299 books

1320 journal articles

1992 research publications over the last ten years

translated to **36** languages

Mentioned in over

17,000 media articles Reaching out to **127** countries

* Information in this publication is correct as of June 2022, but may be subjected to change.

OPPORTUNITIES AND ADVANTAGES

GATEWAY TO A FUTURE IN ASIA



Cosmopolitan City

Language

English – the official language of administration and commerce

Population

- 5.7 million total¹
- Over 50,000 international students annually²
- Diverse traditions and cultures

Infrastructure and Accessibility³

- Integrated urban planning
- Nationwide wireless broadband network
- World-class public transport system

Public policy practitioners are offered myriad opportunities across different industries in Singapore.

07

Recognised as a gateway to Asia, Singapore offers a unique perspective on Asia's transformative shifts that span economic growth, urbanisation, domestic reforms and globalisation. The city-state ranks as the top Asian country for quality of life, and boasts a robust economy, innovative urban infrastructure, amenities and healthcare. Students can leverage on Singapore as a springboard for further research and education opportunities, both within the country and around the region.





Education Hub⁴

- Top-ranked Asian country for quality of life
- Top education hub in the region and one of the best education systems in the world
- Diverse array of scholarships, grants and fellowships
- Educational certificates are widely recognised and highly sought after by international employers



A Global Business Hub³

- Pro-business policies
- Most competitive in Asia
- Second-most competitive in the world
- Over 7,000 companies headquartered in the country
- Over two-thirds of the world's top 30 medtech device companies have regional headquarters in Singapore
- Among the top in the world's easiest places to do business
- Stable economic climate



Strategic Location

- Changi International Airport serves more than 100 airlines flying to some 390 cities in about 100 countries and territories worldwide. Each week, about 7,400 flights land or depart from Changi.³
- 7-hour flight radius to China, India and the Southeast Asian region



Safety and Security

- Trusted legal and corporate governance systems
- Low crime rate

¹ <https://www.singstat.gov.sg/find-data/search-by-theme/population/population-and-population-structure/latest-data>
² <https://www.trade.gov/knowledge-product/singapore-education>
³ <https://www.changiairport.com/corporate/our-expertise/air-hub/traffic-statistics.html>



GLOBAL PARTNERSHIP

INTERNATIONAL LEARNING WITH AN ASIAN FOCUS

Double Degree Partners

Global Public Policy Network Partners

Student Exchange Partners

University of British Columbia

Munk School of Global Affairs & Public Policy, University of Toronto

Escola de Administracao de Empresas de Sao Paulo, Fundacao Getulio Vargas

The McCourt School of Public Policy, Georgetown University

School of Advanced International Studies, John Hopkins University

School of International and Public Affairs, Columbia University

Our collaboration with world-class institutions ensures the continual enhancement of pedagogy and research.

London School of Economics and Political Science

School of Public Affairs, Sciences Po

Hertie School of Governance

Moscow State Institute of International Relations (University)

Fudan University

School of Public Policy, Tsinghua University

Yonsei University Graduate School, Yonsei University

Graduate School in International Studies, Seoul National University

Department of Public Administration, Korea University

Graduate School of Public Policy, University of Tokyo

Graduate School of Public Policy, Nazarbayev University

Università Commerciale Luigi Bocconi

University of St Gallen

The Graduate Institute of International and Development Studies

NUS Business School, National University of Singapore

NUS Faculty of Law, National University of Singapore

DISTINGUISHED VISITORS

ICONIC LEADERS AT OUR DOORSTEP

Notable academics, diplomats and heads of states share their public policy expertise.

Our annual public lectures and forums are renowned for their supportive and collaborative learning atmospheres. Students, faculty and visitors can delve into policy issues for new insights and fresh perspectives. Some of our distinguished visitors include:

Daw Aung San Suu Kyi

Nobel Peace Prize Laureate

Sir Michael Barber

Former Chief Education Advisor, Pearson PLC

Mr Tony Blair

Former Prime Minister of the United Kingdom

Ms Martha Choe

Former Chief Administrative Officer of the Bill & Melinda Gates Foundation

Ms Helen Clark

Former Administrator of United Nations Development Programme and former Prime Minister of New Zealand

Mr Dick Costolo

Former Chief Executive Officer, Twitter

Mr Thomas Friedman

Pulitzer Prize-winning journalist and author

Prof Francis Fukuyama

American political scientist, political economist

Prof Kishore Mahbubani

Distinguished Fellow, Asia Research Institute, NUS; Founding Dean, Lee Kuan Yew School of Public Policy; Former President of the UN Security Council

H.E. Pavlo Klimkin

Foreign Minister of Ukraine

Mr Pascal Lamy

Former Director General of the World Trade Organisation

Dr Justin Yifu Lin

Former Chief Economist and Senior Vice President, World Bank

Lord Peter Mandelson

Chairman, Global Counsel
Former First Secretary of State and Secretary of State for Business
Former European Trade Commissioner

Hon Murray McCully

Former Minister of Foreign Affairs, New Zealand Government

Prof Romano Prodi

Former President of European Commission

Mr Klaus Regling

German economist and current Chief Executive Officer of the European Financial Stability Facility (EFSF) and Managing Director of the European Stability Mechanism

Mr Kevin Rudd

Former Prime Minister of Australia

Prof Klaus Schwab

Founder and Executive Chairman, World Economic Forum

Prof Amartya Sen

Professor, Thomas W. Lamont University, and Professor of Economics and Philosophy, Harvard University
Nobel Memorial Prize laureate in Economic Sciences

Dr Rebecca Fatima Sta Maria

Former Secretary-General of the Malaysian Ministry of International Trade and Investment

Mr Tharman Shanmugaratnam

Senior Minister of Singapore

Prof Andrew Sheng

Distinguished Fellow, Asia Global Institute, The University of Hong Kong

Mr Tan Chuan-Jin

Speaker of the Parliament of Singapore





“

You can't guarantee the quality of future kings, so you must start democracy at the right time, and the time is now.”

Mr Tshering Tobgay
Former Prime Minister of Bhutan



Mr David Cameron
Former Prime Minister of the
United Kingdom



Mr Kevin Rudd
Former Prime Minister of Australia

ALUMNI

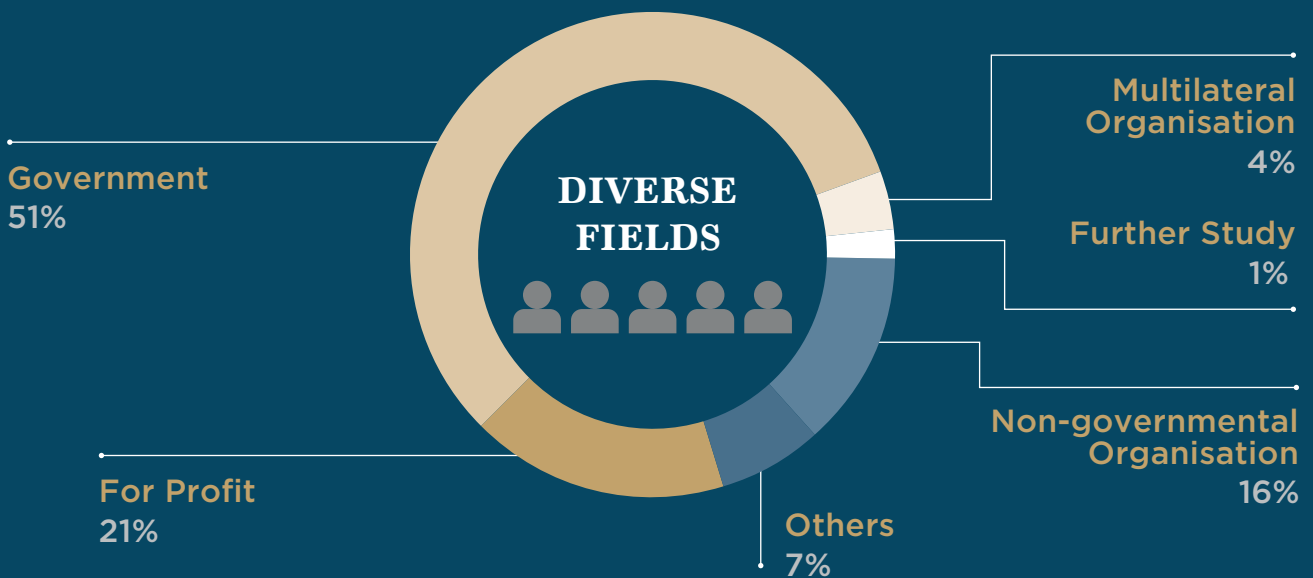
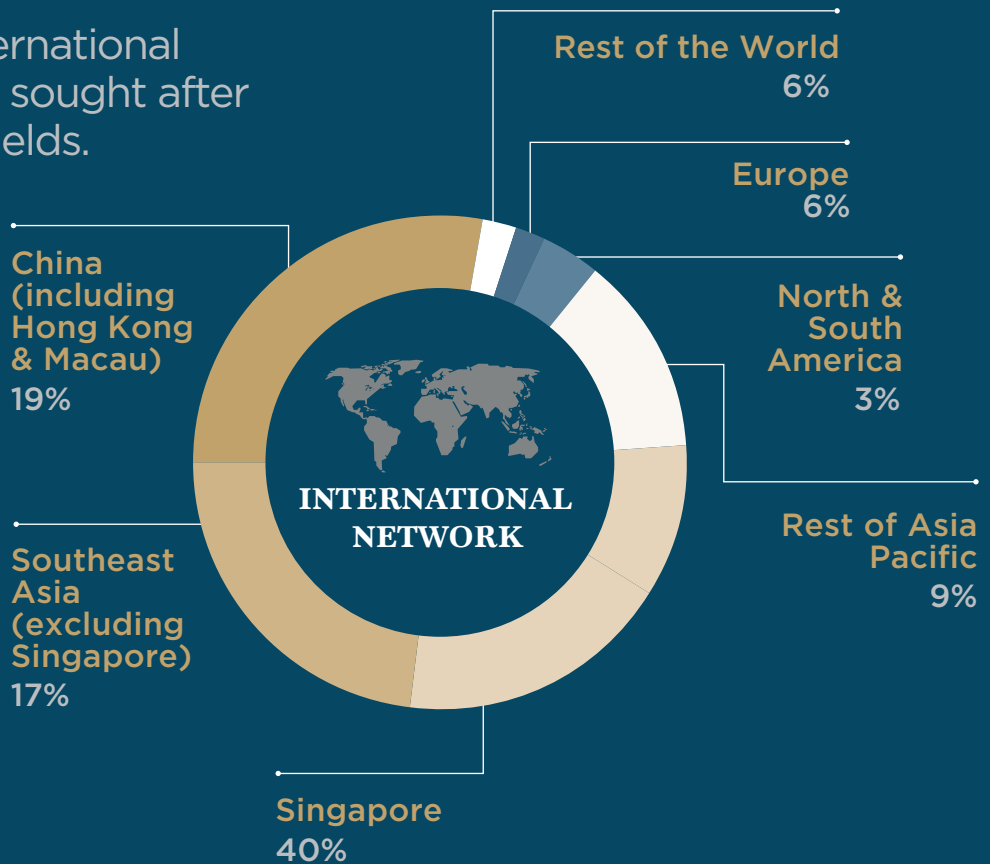
IGNITING REAL-WORLD, POSITIVE TRANSFORMATION

Our graduates are international change agents, highly sought after in a diverse range of fields.

An education at Lee Kuan Yew School of Public Policy is a gateway to a world of opportunities. Our alumni continue to make a difference across the globe — refining public policy, establishing businesses and advancing non-profit movements.

13

Harnessing Global Knowledge & Trends



Based on Alumni Database

Our Movers And Shakers

LKYSPP Alumni

Mr Tan Chuan-Jin

Speaker of the Parliament of Singapore

Mr Tan Chuan-Jin served as the Minister for Social and Family Development from 9 April 2015 until his election as Speaker on September 2017, making him the 10th Speaker of Singapore. Previously, as Minister for Manpower, Mr Tan introduced the Silver Support scheme, increase older workers' CPF contribution rates to better support the elderly, oversaw the implementation of the Progressive Wage Model and introduced the Fair Consideration Framework to ensure a level employment playing field for Singaporeans.

Ms Khemmani Pholsena

Minister and Head of the President's Office

Ms Khemmani Pholsena is Minister and Head of the President's Office of Lao PDR. She is the former Minister of Industry and Commerce.

Mr Ugyen Dorji

Minister for Labour and Human Resources, Bhutan

Mr Ugyen Dorji, Minister for Labour and Human Resources of Bhutan, has been a member of the National Assembly of Bhutan since October 2018. Before entering politics, he used to work in the Ministry of Foreign Affairs of Bhutan from 2013 to 2018. He was also a reporter at The Journalist in 2011.

Mr Prum Sokha

Civil Service Minister, Ministry of Civil Service, Cambodia

Mr Prum Sokha, Civil Service Minister of Cambodia, has worked for the government for more than 20 years. Prior to this role, Mr Prum Sokha was a high-profile Secretary of State at the Ministry of Civil Service.

Mr Andrés Valenciano

Minister of Foreign Trade of Costa Rica

Mr Andrés Valenciano is the Minister of Foreign Trade of Costa Rica. Before assuming his current role, Andres served as President and Chief Executive Officer of Instituto Nacional de Aprendizaje.

Singapore

Mr Jack Sim

Founder, World Toilet Organisation (Singapore)

Mr Aubeck Kam Tse Tsuen

Permanent Secretary,
Ministry of Manpower, Singapore

Mdm Foo Chi Hsia

Singapore's High Commissioner to
United Kingdom, Ministry of Foreign Affairs

Indonesia

Dr Hetifah Sjaifudian

Member of Parliament (Indonesia)

Malaysia

Ms Wong Shu Qi

Member of Parliament (Malaysia)

India

Mr Amar Patnaik

Member of Parliament (India)

Maldives

Ms Fathimath Niuma

Deputy Minister, Ministry of National Planning,
Housing and Infrastructure, Maldives

Philippines

Ms Maria Anthonette

Velasco Allones

Chief Operating Officer,
Tourism Promotions Board Philippines

China

Mr Lu Kang

Director, Department of North American and
Oceanian Affairs, Ministry of Foreign Affairs,
People's Republic of China

RESEARCH APPROACH

SHAPING SCHOLARLY INQUIRY AND POLICY-MAKING

The Lee Kuan Yew School of Public Policy (LKYSPP) is committed to producing innovative and rigorous research that contributes both to scholarly inquiry as well as policy-making in Asia.

In the midst of Asia's transformative shift, we are ideally positioned to shape the research agenda on the region's economic, social, governance and environmental challenges and opportunities. We focus on four broad areas that reflect a transitioning Asia.

The power balance and political landscape of the world has changed dramatically in recent decades. As Asia plays an increasingly prominent role in global affairs, we study the power shifts taking place across Asia and globally, and explore the geopolitical implications of these shifts for regional order in East and Southeast Asia. Our research brings a distinct Asian perspective to the study of politics and international relations, including consideration of the role of history and identity in shaping thinking in this area.

International Relations and Global Governance

Governments across Asia face a myriad policy challenges, from balancing growth and equity to reducing poverty and promoting sustainable development. Our research focuses on how governments respond to these challenges, and on the actors, institutions and mechanisms involved in building a capable state. We examine questions of policy design and implementation, enforcement and regulation, and policy effectiveness, efficiency, fairness and sustainability.

Policy Studies, Public Management and Governance

**Economic
Development and
Competitiveness**

Emerging Asia accounts for more than half of world economic growth. Our research examines the implications of Asia's economic transformation for the region's current and future well-being. Specific research themes include international trade, finance and investment; regional economic integration; fiscal sustainability; technological innovations and the competitiveness of sub-national economies, cities and firms. Across these areas, we are interested in how to construct an ecosystem that enables an integrated approach to economic development and financial stability.

Social Policy

As Asia undergoes rapid economic and demographic transformations, it must address a range of urgent problems that are placing heavy burdens on public finances and social systems. We bring an Asian perspective, insights from Singapore and an interdisciplinary approach to the investigation of these critical social policy issues. Our research addresses, among other topics, labour market dynamics, social safety nets, pension systems, health economics and health care systems, and ageing societies.

RESEARCH CENTRES

CENTRES FOR ADVANCING POLICY RESEARCH

Our four research centres build networks for policy dialogue between policymakers, academics and other stakeholders.

The research centres address varied areas of policy challenges in Asia: regional competitiveness, the role of Asia in global affairs, governance and social policy in Singapore and across Asia, and water and environmental stress across the region. Their approach to research ranges from purely academic to highly policy-relevant.

17

ASIA COMPETITIVENESS INSTITUTE

Asia Competitiveness Institute (ACI)

About Us

ACI seeks to contribute to the enhancement of inclusive growth, living standards, and institutional governance through competitiveness research on sub-national economies in Asia.

Engagement and Influence

ACI has established partnerships with an extensive network of regional governments, including more than 40 governments at the provincial and national level across China, India, Indonesia and elsewhere in ASEAN. ACI also collaborates with regional and global institutions including the World Bank and the European Central Bank.

ACI has been recognised by the Singapore government for its role in building indigenous research capabilities and was recently cited in the government's Report of the Committee on the Future Economy.

CENTRE ON ASIA AND GLOBALISATION

Centre on Asia and Globalisation (CAG)

About Us

CAG is dedicated to conducting in-depth research on developments in the Asia-Pacific and beyond. CAG seeks to provide accurate, independent, and high-quality analysis on issues of regional and global significance for academia, decision-makers, commentators, and the general public.

Engagement and Influence

CAG has established collaborative global networks with major think tanks in the United States, Europe, Russia and across Asia. Through these collaborations, CAG serves as a platform for meaningful and constructive exchanges among leading scholars, top policy experts, and senior government officials.

CAG's Regional Security Roundtables bring together members of the Chinese and Indian policy communities for Track II dialogues on security, economics and diplomacy. CAG has hosted seven roundtables since 2012.

CAG researchers are regularly consulted by governments and give presentations and lectures to key institutions including the Shangri-La Dialogue, CCP Central Party School and the Valdai Club Conference.





Institute of Policy Studies (IPS)

About Us

IPS analyses public policy in Singapore, builds bridges between thought leaders, and communicates its findings to a wide audience.

Engagement and Influence

IPS is recognised by policymakers, the media, businesses and civil society in Singapore and beyond for providing a fine-grained and research-based understanding of how Singapore ticks in various areas. By examining the immediate and long-term impact of government policies, IPS helps Singaporean policymakers consider what emerging and long-range trends they should pay heed to in policy formulation.

IPS also builds bridges between thought leaders from the public and private sectors, academia, and civil society through conferences, seminars and closed-door discussions.



Institute of Water Policy (IWP)

About Us

IWP aims to improve water policy and governance in Asia through research, training, thought leadership and consulting.

Engagement and Influence

IWP has broad yet intimate engagement with water policymakers across Asia, including in India, the Philippines, Cambodia, Vietnam and Nepal, and with institutions such as the Asian Development Bank and the World Bank. In Singapore, IWP and LKYSPP engage in regular policy dialogue with the Public Utilities Board and conduct research on water consumption behaviour, recycled water and water tariffs.

IWP is also a leader in water policy training in the region. With the support of Temasek Foundation International (TFI), IWP and Executive Education have trained more than 200 water leaders across Asia through the TFI Water Leadership Programme.

FACULTY

LEADING BY EXPERIENCE AND EXAMPLE

A robust and diverse faculty grounds Lee Kuan Yew School of Public Policy curricula and research endeavours.

Research Driven

Our faculty actively push the boundaries to produce innovative research that furthers scholarly inquiry and policymaking, drawing on various theoretical, conceptual, methodological and disciplinary tools and perspectives.

QUAH, Danny,

Dean and Li Ka Shing Professor in Economics, Lee Kuan Yew School of Public Policy

Applied timeseries econometrics; Economic growth and development; International economics; World order; Models of global power relations

AKTER, Sonia,

Assistant Professor

Agriculture; Climate change; Environmental policy and economics; Food security; Gender equity; Non-market valuation; Women empowerment

ARARAL, Eduardo,

Associate Professor and Co-Director, Institute of Water Policy

Collective action and the commons; Institutions; Water management, governance and policy

BA, Yuhao,

Assistant Professor

Performance management, Environmental policy and politics, Non-state governance, Public policy process

BAJPAL, Kanti Prasad,

Director (Centre on Asia and Globalisation) & Wilmar Professor of Asian Studies

International security; Asian security; China-India relations; South Asia; India's foreign policy and national security

CASHORE, Benjamin William,

Li Ka Shing Professor in Public Management and Co-Director, Institute of Water Policy

Comparative policy analysis; Corporate social responsibility; Environment and climate change; Global environmental governance; Private governance; Public management

CHEN, Kang,

Director (MPAM) and Visiting Professor

Budgeting; China development policy; China economy; China provincial-central government relations; Decentralisation and federalism

CHEUNG, Paul,

Director (Asia Competitiveness Institute) and Professor in Practice

Demography and Comparative; Population Policy; National Data Policy and Information Architecture; Singapore Social Policies

CHU, Jonathan Art,

Assistant Professor

Comparative Politics, Democracy, Great Power Policymaking, Identity and Norms, International relations, Public Opinion, Survey Research, War

DEMIRCIOGLU, Mehmet Akif,

Assistant Professor

Public sector innovation; Employee attitudes; Social media in the public sector; Governance reforms; Public management

FONG, Joelle H.,

Assistant Professor

Annuity pricing; Economic and health aspects of population aging; Health state transition modeling; Longevity risk management and retirement security; Long-term care financing and insurance; Pension economics and finance; Public and private insurance markets

FRANCIS-TAN, Andrew,

Visiting Associate Professor

Education; Labor; Health; Demography and population; Race/ethnicity

GOSWAMI, Sanjana,

Assistant Professor

International Macroeconomics; International Trade; Labor Economics

GU, Qingyang,

Director (Chinese Executive Education) and Associate Professor

China economy; Infrastructure development; Singapore public policy; Urban policy and planning

GUPTA, Anubhav,

Assistant Professor

Not-for-Profit Management; Public Financial Management

HAMEDUDDIN, Taha,

Assistant Professor

Employee attitudes; Organizational Behaviour and Human Resource Management; Public Management Public

HAN, Dan,

Assistant Professor

Health policy and health economics; Maternal and child health; Prescription drug policies; Provider behavior and clinical decision making

HO, Selina,

Assistant Professor

China-India relations; China central-local relations, China-Southeast Asia relations; Chinese politics and foreign policy; Public goods provision; Water politics

HO, Wai Luen Terence,

Associate Professor in Practice

Economic and manpower policy; Fiscal policy; Public sector management and organisation; Social security, inequality and social mobility

HOFMAN, Bert,

Director (East Asian Institute) and Professor in Practice

Fiscal policy; China's and Indonesia's recent economic history.

We have over 50 permanent and visiting professors who bring an international reputation as well as academic and policy expertise to the classroom.

HUI, Weng Tat,
Associate Professor

Ageing and poverty; Globalisation and labour market impact; Human capital and migration policy; Income inequality; Pensions and social security policy; Population; Singapore labour market

IBRAHIM, Yaacob Bin
Professor in Practice

JIN, Lawrence,
Assistant Professor

Behavioral Economics, Cost-Benefit Analysis, Environmental Economics, Health Economics

KADIR, Suzaina,
Vice Dean (Academic Affairs) and Associate Professor

Ethnicity and religion in Southeast Asia; Public-private partnerships

KANETI, Marina, Jose,
Assistant Professor

Global governance; Migration and immigration; Political agency; Visual politics

KHONG, Yuen Foong,
Vice Dean (Research and Development) and Li Ka Shing Professor in Political Science

ASEAN and Southeast Asia; International relations theory; International security

LEE, Zeewan,
Assistant Professor

Economics of skills development; Employment and training programmes, Healthcare reform; Labour market impacts of technology changes; Retirement

LEONG, Ching,
Associate Professor, LKYSPP; Vice Provost (Student Life) and Dean of Students (Office of Student Affairs)

Environmental identities; Institutional change; Narratives of water; Policy communications; Recycled drinking water; Role of emotions in policy making

LIM, Siong Guan,
Professor in Practice

Leadership development and national governance; Leadership and change management

LIU, Yao Adam
Assistant Professor

Authoritarian Politics; Chinese politics and foreign policy, Political Culture and Political Economy

LU, Xi,
Assistant Professor

Development economics; China economy; Corruption and governance

MANCINI, Francesco,
Vice Dean (Executive Education) and Associate Professor in Practice

International Relations Theory ; Conflict analysis and resolution; Mediation; United Nations

NG, Reuben,
Assistant Professor

Social gerontology; Healthcare and people analytics; Learning analytics; Retirement; Resilience; Social cohesion; Culture; Psychometrics; Policy and program evaluation; Smart cities; Data policy, Strategy and cyber security

RAJAN, Ramkishan S,
Yong Pung How Professor

Asian monetary and financial regionalism; Exchange rate regimes and effects; Financial development and financing for development; Foreign direct investment and other financial flows

RAMESH, M,
UNESCO Chair on Social Policy Design in Asia

Policy and governance design; Social policy In Asia: health, education, pensions

RAVINDRAN, Saravana,
Assistant Professor

Applied microeconomics; Development economics; Human capital formation; Mobile banking

RYU, Yongwook,
Assistant Professor

East Asian international relations; Foreign policies of China, Japan, Korea and ASEAN

TAEIHAGH, Araz,
Assistant Professor

Decision support systems and applications of complexity and systems approach to public policy and strategy; Infrastructure and sustainable development; Policy design, analysis, and analytics; Socio-Technical systems, technology policy and governance of technology

TAN, Poh Lin,
Assistant Professor

Singapore population policy; Demography and population; Education policy; Social policy

TAN, Soo Jie Sheng,
Assistant Dean (Student Affairs) and Assistant Professor

Ecosystem services valuation; Global environmental health and development; Pollution regulation in China

TAN, Yong Soon,
Director (SFPS) and Professor in Practice
Leadership development and national governance

THAKUR, Ashutosj Dinesh,
Assistant Professor

Market Design, Organisational economics, Political Economy

THOMAS, Vinod,
Visiting Professor

Development economics; Environment and climate change; Evaluation; Poverty and income distribution

VU, Minh Khuong,
Associate Professor

ASEAN economy; Asian competitiveness; Asian economy; China Economy; Growth and technology in Asia; Singapore economy; Trade, investment and finance

WU, Alfred Muluan,
Assistant Dean (Research) and Associate Professor

Public sector reform; Central-local fiscal relations; Corruption and governance; Social protection in Greater China

ZHENG, Huanhuan,
Assistant Professor

Behavioral economics and finance; Financial economics; International business and finance

INNOVATIVE PEDAGOGY

ENGAGING STUDENTS THROUGH ACTIVE LEARNING

Bringing the world into your classroom.

Our innovative pedagogy combines technology and academic resources to create a unique teaching environment that goes beyond the walls of a traditional classroom. Fully equipped to support real-time video conferencing, students can learn from renowned academics all over the world and interact with international students, thereby gaining exposure to diverse perspectives and learning environments.

21

Students will gain fresh policy insights through exchanges with international academics and peers on issues such as, state fragility in Nigeria's conflict zones and the peace process in Myanmar.



Pedagogy in Action

Through real-time video conferences, guided discussions, and project work, students can engage in lively debates and spark a meaningful sharing of viewpoints. The active learning classroom bridges the distance between the Lee Kuan Yew School of Public Policy (LKYSPP) and premier institutions such as University of California, University of Cambridge and University of Tokyo. It fosters a collaborative sharing of resources, and the building of networks between LKYSPP students and their international peers.

This simulates a real-world working experience, enabling students to develop the ability to work with their international peers of varied strengths, cultures and backgrounds. The opportunity to work

on projects, which focus on tackling simulated challenges inspired by real-world issues, gives students an edge in honing their problem-solving skills and sharpening their critical thinking skills.

Students will also benefit from tapping into the research strengths of various institutions and experience entirely different education systems. The Distributive Online Collaborative Course (DOCC) allows students to connect with international experts via online collaborative lectures. Multiple screens in the classroom, and the use of specific software, allow students from around the world to “attend” classes without having to be in the same physical location.

Blended Learning in a Globalised Classroom

Blended learning combines face-to-face and non-face-to-face activities within a single classroom. It is intended to allow for greater flexibility and broaden the scope for student learning. Blended learning enhances student engagement, fosters student’s ownership of the learning process and prepare students for the real world.

Student Engagement

Research shows that students are more likely to lose focus after 15 minutes in a traditional lecture setting. By encouraging active learning and participation, the blended learning approach helps to better engage students and deepen their learning experience.

Student-Centric Learning

In blended classrooms, students have access to online resources, such as video lectures, which they can access outside the classroom. Students therefore access resources and class materials at their own pace. Students can watch the lectures as many times as they want so as to master the materials. In a diverse classroom, such as at LKYSPP, this is especially useful as it helps students develop confidence to participate in class.

Real-World Scenarios

Each lesson is more than a lecture of the topic at hand; students are expected to assess, discuss, debate and present their recommendations on scenarios based on real-world challenges and issues.

Diverse Classroom

Our international student body reflects a diverse number of learning styles. The LKYSPP innovative pedagogy is a flexible approach that provides students with the space to learn at their own pace and the opportunity to contribute in an open environment.



HOME — WHERE PAST, PRESENT AND FUTURE MEET



Bukit Timah Campus

National
Monument
& Winner
of the URA
Architectural
Heritage
Award

Situated next to the Singapore Botanic Gardens, a UNESCO World Heritage Site, our campus is a distinctive blend of white colonial-era architecture in the neo-classical style, lush greenery spread over sloping lawns and quadrangles, and modern classrooms, research facilities and study spaces.





College Green — Dunearn Road Hostels



College Green, an estate of hostels over 3.5 hectares comprising 62 terraced-houses. Located within walking distance of our Bukit Timah campus, College Green is home to international graduate students from over 50 countries. More than just living quarters, College Green provides students with a conducive environment that fosters peer learning, exploration of different cultures and professional networking.



GRADUATE PROGRAMMES

INTERDISCIPLINARY LEARNING, INNOVATIVE TEACHING

Distinctive and innovative curricula, situated within the **Asian context** and focused on case- and team-teaching.



25

Inspiring Leadership Excellence

Policy Analysis Exercise

The Policy Analysis Exercise (PAE) is a student-led team project fulfilling the Capstone requirement for Master in Public Policy students. The PAE aims to produce rigorous evidence-based and policy-oriented analysis and recommendations for an external client.

The PAE develops students' capacity to engage and deliver on a high-stakes project as a cohesive team. It draws from theory and practice in public policy, as well as from the students' own research. Students work under the supervision of a faculty advisor and present their recommendations to the client during the annual PAE Conference.

Some of our past PAE clients include:

- Asian Development Bank
- AustCham Singapore
- Avantage Ventures
- The Bangko Sentral ng Pilipinas
- Dyslexia Association of Singapore
- eBay
- Hope for Women Maldives
- Ministry of Administration and Digital Affairs of the Republic of Poland
- Ministry of Manpower, Singapore
- Ministry of Planning and Investment, Vietnam
- Ministry of Trade of the Republic of Indonesia
- National Council of Social Service, Singapore
- National Development and Reform Commission, China
- Oxfam International
- Pacific Economic Cooperation Council
- Pathfinder International Vietnam
- Sanofi-aventis – Asia Pacific & Japan
- Save the Children
- United Nations Development Programme
- United Nations Indonesia
- US-ASEAN Business Council
- World Bank
- Yayasan MENDAKI Singapore

Governance Study Project

The Global Governance Project (GSP) connects the beginning to the end of the Master in Public Administration degree programme, requiring students to put to use the knowledge and skills learnt in each module. Through projects that are real public problems in the region, students will acquire skills related to analysis of complex managerial problems, basic research, writing and other presentational modes. The GSP also aims for students to develop higher emotional intelligence, team building and a strong sense of cohort.

Master in International Affairs (MIA)

- Two-year, full-time programme
- For people who are passionate about contributing to positive transformation in Asia and beyond
- Brings Asia's role as a key influencer in world affairs to the forefront, and draws from a range of subjects like international political economy, global governance, foreign policy analysis and geopolitics
- Requires students to undertake a Master Thesis in cooperation with a practice partner or a Capstone Project under the supervision of a faculty member

Lee Kuan Yew Senior Fellowship in Public Service Programme (SFPS)

- Six-week programme
- For senior leaders in public, private and non-profit sectors
- Features a rigorous curriculum that focuses on developing leadership and governance competencies of participants, equipping them with the tools to take on challenges at a global level
- SFPS participants will be known as Lee Kuan Yew Senior Fellows

Master in Public Administration and Management (MPAM)

- A master degree programme in public administration and management conducted in Chinese
- Available in both ten-month, full-time track and 2-year part-time track
- For mid-level and senior government officials and senior executives from SOEs, NGOs and the private sector
- Problem-based learning approach and real-world case studies drawn from China and Asian countries to enhance the students' analytical and management capabilities, and sharpen their leadership and communication skills.



Master in Public Policy (MPP)

- Two-year, full-time programme
- For young professionals with up to five years of work experience
- Develops a strong foundation in policy analysis, programme evaluation and management
- Requires students to undergo the Policy Analysis Exercise (PAE), where they will have to define and analyse policy issues, evaluate existing programmes, formulate and assess policy options and develop specific, actionable recommendations for a client organisation
- Option of pursuing a double degree at NUS Business School (MPP-MBA) or NUS Law School (MPP-LLM)

Master in Public Administration (MPA)

- One-year, full-time programme
- For senior managers from the public and non-profit sectors, as well as multilateral organisations
- Provides intensive, interdisciplinary training to tackle complex issues that shape national, regional and global policies and projects
- Option of pursuing a double degree at NUS Business School (MPA-MBA) or NUS Law School (MPA-LLM)

PhD in Public Policy

- Minimum four-year programme
- For applicants who demonstrate strong potential for high quality doctoral work, timely completion and successful academic careers
- Imparts high-level theoretical, methodological and substantive expertise in public policy, as well as necessary communication skills for teaching and research careers

EXECUTIVE EDUCATION

GREATER LEARNING OPPORTUNITIES

Uniquely designed to strengthen the leadership and management capabilities of organisations and working professionals.



The Lee Kuan Yew School of Public Policy (LKYSPP) Executive Education programmes provide leaders the opportunity to develop skills to thrive in a complex, fast-changing world. They encourage critical reflection, impart valuable knowledge on governance and policy making, and create opportunities for learning across departmental boundaries and intellectual disciplines. Our diverse and international faculty helps to equip working professionals and organisations with multiple perspectives to make sense of the complexity they face.

To date, we have served the interests of over 24,000 working professionals in 114 countries. Participants are exposed to innovative pedagogies such as scenario planning, case studies, and field visits. Through the integration of theory and practice, we help participants become more effective managers, leaders and decision-makers, able to influence and impact the development and management of their organisations.

In support of distance education, our programmes are available online via synchronous and asynchronous learning, and offered in both open-enrolment and customised programmes.

Open Enrolment Programmes

Our Open Enrolment Programmes cater to the needs of time-constrained senior managers that aim to strengthen their management and leadership skills, as well as new knowledge. From two-day to multi-week programmes, we provide them with a conducive setting for substantive dialogue, experiential learning, and peer networking.

Customised Programmes

By engaging academic experts and experienced practitioners, we design and develop bespoke programmes that align learning objectives with our clients' priorities. Programmes can range from a few days to several years and are conducted in Singapore or at overseas client organisations.

Chinese Executive Education

Complementing our core Executive Education programmes, the Chinese Executive Education provides customised programmes in Mandarin to meet the increasing training demands from Chinese-speaking regions. Our Chinese programmes are certified for international exchange of personnel by China's State Administration of Foreign Experts Affairs.*in Singapore or at overseas client organisations.

Consultancy

We work with governments and institutions to help them build their organisational capacity and capability. Since 2012, we have supported the establishment and development of the Graduate School of Public Policy at Nazarbayev University. Consultancy services include the development of research agenda, academic curriculum and faculty recruitment.

Mode of Delivery:

On-Campus Learning

Distance Learning

Hybrid Learning

*Our registration number from the China State Administration of Foreign Experts Affairs is 121901.

FUNDING AND SUPPORT

THE FOUNDATION OF OUR IMPACT

A better world starts with an investment in good governance and thought leadership.

Our donors have enabled us to maintain a world-class campus, engage renowned faculty and create innovative teaching methods. Their support fuels the development of future policymakers and thought leaders who impact governance across the globe.

Over 75 per cent of our students receive scholarships or some form of financial aid, and this is projected to remain as the key enabler for students from the region to seek public policy education at the School.



Carlos C. Sengu
The Olam International MA Scholarship for Change Catalysts in African Markets Master in Public Administration 2017/2018 (Zimbabwe)

“ It is an axiom of life that ‘of all the books in the world, the best stories are found between the pages of a passport.’ I had a dream to invest further in my intellectual capital by studying abroad and Olam, through the scholarship has made my dream come true. Olam opened the doors that gave me the privilege to travel to Singapore and study at one of the best universities in the world, coupled with the opportunity to reside in one of the most liveable and sustainable nations on planet. My sojourn in the ‘Lion City’ enhanced my cultural literacy and also gave me the platform to learn the specialised skills, cultivate informed perspectives, and nurture the nuanced understanding that I need to be an even more effective leader in solving public policy problems.”



Kwok Ka Ming, Andre
Master in Public Policy 2019/2021
Li Ka Shing Foundation Scholarship (Hong Kong SAR)

“ The unique opportunity offered by the Li Ka Shing Foundation Scholarship has enabled me to embrace and reaffirmed the spirit of social entrepreneurship within me to want to create an impact and contribute back to society. LKYSPP is a melting pot of distinguished academia, policymakers, and students from the world over. With such a vast and diversified network and culture, as well as an interdisciplinary curriculum, I am better equipped to be a future leader and contribute more to my home country, Hong Kong, and be a bridge to Asia and the rest of the world. This would not have been made possible without the support from the Li Ka Shing Foundation, and for this, I am grateful.



Iuliia Zemlytska
Lee Foundation Scholarship Master in Public Policy 2016/2018 (Ukraine)

“ My years at the LKYSPP and living in Singapore has been a journey of discovery in so many ways. Foremost, it was a discovery of Asia and embracing the diversity of this region. Secondly, it was an intellectual discovery where I learned new concepts and was immersed in the world of public policy. Lastly, it has been a journey of self-discovery where I was given a chance to learn more about my passions and interests and how best to sharpen my skills to have more impact in this world. All these could not have been made possible without the generous support of the Lee Foundation.



Francesco Brusaporco
Stamford Land Scholarship (Italy)
Master in International Affairs 2018/2020

“ When I was choosing to pursue my masters, the LKYSPP was at the top of my list, but I simply could not afford it. Stamford Land supported my studies and enabled me to choose what is best for myself. During my two years at the LKYSPP, I have worked together with people from different countries and diverse backgrounds to create a truly global perspective on international affairs. I have done an internship in China, an exchange programme in Kazakhstan, and Singapore is now my 'second home'.

Apply to Lee Kuan Yew School of Public Policy (LKYSPP)

The application process for LKYSPP programmes is conducted on a yearly enrolment. Please visit <https://lkyspp.sg/3gnehFt> for full details.

We accept online applications through the Graduate Admission System at <https://lkyspp.sg/gda2>.

Application fees for all programmes have been waived.



Lee Kuan Yew
School of Public Policy



469C Bukit Timah Road, Oei Tiong Ham Building, Singapore 259772
Email: lkypostgrad@nus.edu.sg
Website: lkyspp.nus.edu.sg